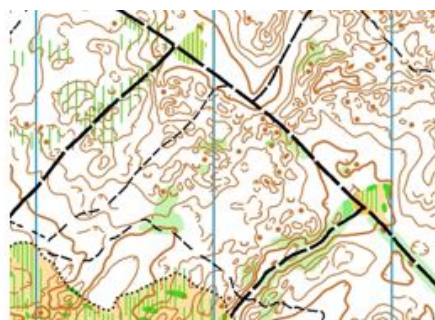




**Sprint Series**  
**Feb-April**

**AKSS**  
**Orienteering**  
**2018**



**Forest/Farm Series**  
**March-May**

## **AKSS Forest Series 2018**

A new Forest Series is being added to the Auckland schools orienteering calendar this year.

The Sprint Series will continue as normal. The Forest Series will follow with events on Sundays 18 & 25 March and 6 May leading to the Auckland Secondary School Champs on 24 May.

The addition of the Forest Series to the Auckland schools orienteering competition will provide three forest orienteering events in the lead-up to Auckland Champs - a progression supporting skill development and increased competition at Auckland Champs. There will be coaches available at two of the events (see below) for the first hour between 10am and 11am. We encourage all students new to the Forest to arrive at 10am to make the most of this coaching opportunity before they run their race from 11am. While you do not need to pre-enter, we would appreciate an indication of numbers to assist with planning.

School groups can be registered using <https://goo.gl/forms/gQnUIDHj41Q21zu43>

Alternatively, individual students can register using <https://goo.gl/forms/ACHpUEyet7MMEAUh2>

Forest Series events results will allow AKSS organisers and school sports coordinators to select the appropriate grade (Novice, Standard or Championship) in which to enter each student for AKSS Individual Championships. For 2018 these will act as guidelines, however, it is anticipated that in the future these will become qualification rules. [qualification rules attached or see your school representative].

Sprint Series organiser, Mike Beveridge, says *"There is a big leap in difficulty between the campus-based Sprint Series and the forest-based Auckland Champs. Navigating on forested terrain is much harder for inexperienced students than the school environment. Time in the forest with a map is best preparation for success at the championship events."*

President of North West Orienteering Club, Jenny Cade, says *"The Sprint Series has been huge success story for Orienteering, allowing thousands of fantastic young athletes an experience of our sport. Still, it is a big step-up in difficulty when you get to Auckland or NZ Champs. We want to better support these students to bridge the gap from school to forest terrain, and the Forest Series will help to progress their skills and prepare them for major events such as Auckland, North Island and NZ Secondary School Champs."*

The 2018 competition is a pilot project run by North West Orienteering Club, Auckland Orienteering Club and Counties Manukau Orienteering Club. We will welcome feedback and review the series at the end of this year. Accreditation from College Sport will be sought for the 2019 calendar.

**So to summarise, students who wish to progress onto Forest Orienteering and plan to enter AKSS Championships should:**

- **Choose at least two of the three Forest events offered (below)**
- **Arrive at the event centre by 10:00am, pay entry fee (see details below) and request coaching (for 25 March and 6 May events)**
- **Undertake the pre-race coaching with their allocated coach**
- **Run race. If time permits a second, harder course could be attempted that same day.**

### **Sprint Series**

Information has been emailed to schools from Mike Beveridge

### **Forest Series**

Sunday 18 March - Plantation Farm, Maramarua

Sunday 25 March - Lake Kereta, Parakai (**coaching available**)

Sunday 6 May - Temu Road, Woodhill (**coaching available**)

Detailed information about each event can be found on <https://www.nwoc.org.nz/events/>

### **Auckland Secondary School Orienteering Championships**

Thursday 24 May, Woodhill Forest

For more information contact Kaye Griffiths on [kaye@griffiths.gen.nz](mailto:kaye@griffiths.gen.nz)

### **Entry Fees for Forest Series for students who are not a member of an Orienteering Club**

18 March Maramarua Event

- \$15 including SI hire

25 March and 6 May Events

- If it is your first time in Forest – Free to run (but need to pay \$3 SI hire)
- After that, \$15 per event (plus \$3 SI hire)

Note – Annual student membership to most clubs is \$20, and then member student entry rates to each event is \$10 so it does not take long to pay back your membership! Talk to representatives at the events if you are interested in joining a club.

Students from

- North Shore and West Auckland – North West Orienteering Club <http://www.nwoc.org.nz/>
- Central Auckland – Auckland Orienteering Club <http://www.orienteeringauckland.org.nz/>
- South Auckland – Counties/Manukau Orienteering Club <http://www.cmoc.co.nz/>